

# Wexis

WEXIS SMALL INSTRUMENT SERIES

Wexis FL220 Floatation/Drying Workstation is a useful tool routinely used in medical laboratories, scientific research institutions and histology laboratories for production of histological sections and slides for pathological investigations and analysis.

Detachable  
Stainless steel  
Water Bath

## Combination Unit for Floatation & Drying

- Both functions are independent of each other with separate control panel

Combination Unit  
for  
Floatation & Drying

Microprocessor  
Temperature  
Control

## Microprocessor Temperature Control

- Controls and automatically adjusts the temperatures
- Temperature adjustments can be set from 00.0°C to 99.0°C
- Separated control for float bath and dryer, LED digital display, auto memory of last settings.

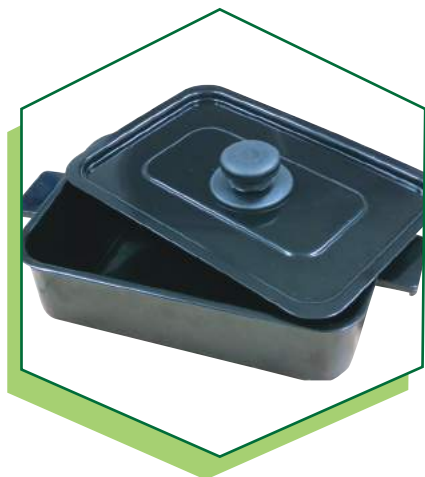
Ergonomic  
Slim  
Design

WEXIS GROUP LIMITED  
is a global pathology supplies and medical  
equipment manufacturer. We have advanced  
professional equipment, dedicated research  
development laboratory, and production  
workshop, and are one of the leading  
manufacturers of pathology supplies in China.

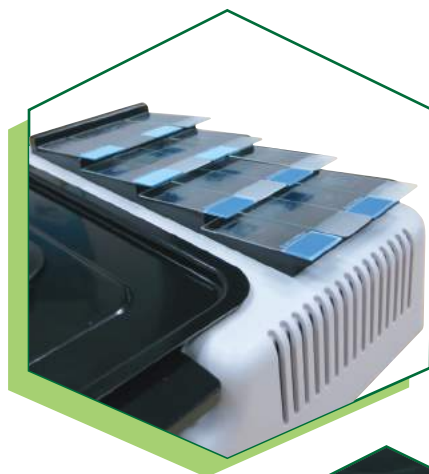
# FL220 Floatation/ Drying Workstation



\*Patent Number: ZL201220590908.9



Detachable water bath offers easier water replacement and cleaning; maintenance is more convenient.



"Stacking Tiles" style drying hotplate with 4 beveled surfaces takes a maximum of 16 glass slides at one time.

Stainless steel water bath and drying hotplate are both painted in black, providing ideal contrast for easy observation of paraffin sections.

Ergonomically designed with small and slim body. The front panel is tilted by 40° with IC touch-sensitive panel which provides users with easy and convenient operation.



Special gill designed PE outer casing avoids water splashes and unit is ideally insulated, offering safe and relaxed operation.

## Technical Data

Dimensions	415mm*310mm*120mm
Floatation Bath	220mm*145mm
Dryer Panel Area	248mm*107mm
Weight	5.45Kg
Line-in(Voltage)	AC220~50Hz 0.3A
Rating	260W (Bath-220W;Dryer-60W)
Dryer Temp. Set	Room Temp - 99°C
Accuracy	Set temp. $\pm 2^{\circ}\text{C}$
Bath Temp. Set	Room Temp - 99°C
Accuracy	Set temp. $\pm 2^{\circ}\text{C}$
Duration of Reach Set Time	<30mins
Specifications take at	25°C Room Temp.
Certification	CE Quality Certified Organization

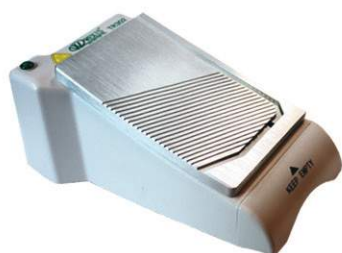


## Ordering Number

Order Number	220-00-00
Model	FL220
Name	Floatation/Drying Workstation FL220
Includes	Main Unit Water Trough (1) Lid for Trough (1) Power Cable (1) Instruction (1)

Remarks: Photos in this catalogue are for illustration only.

## WEXIS SMALL INSTRUMENT SERIES



**Wax Trimmer TR302**



**Slide Drying Hotplate DR230**



**Wax Dispenser WD360**

Manufacturer: WEXIS GROUP LIMITED

Address / Unit 1611, 16/F, Yuen Long Trading Centre, 33 Wang Yip Street, Yuen Long, N.T, Hong Kong  
Tel / 852-2567-2882 Fax / 852-2567-6333

China Head Office: GUANGZHOU WEXIS BIOTECH LIMITED

Address / No.4 of Yin Sha Road 2, Sha Pu Yin Sha Industrial Park,  
Xin Tang, Zeng Cheng District, Guangzhou, P. R, China (Posted Code: 511388)

Tel / 8620-8779 3718 Fax / 8620-8779 3728

[www.wexisgp.com](http://www.wexisgp.com)